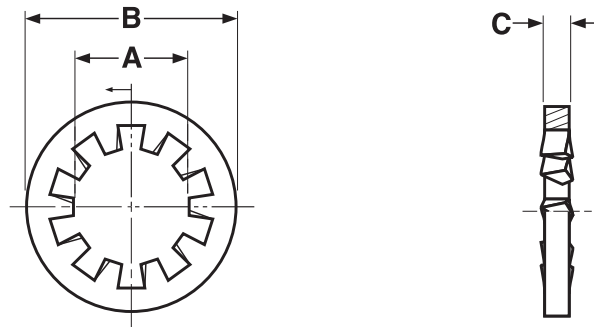


## Internal Tooth Lockwasher

## WASHERS



METRIC - INTERNAL TOOTH LOCKWASHERS						DIN 6797 J; JIS B 1255
Nominal Size	A		B		C	Preferred Number of Teeth per DIN spec*
	Inside Diameter		Outside Diameter		Washer Thickness	
	Max	Min	Max	Min	Min	
M2	2.34	2.2	4.5	4.2	0.6	6
M2.5	2.84	2.7	5.5	5.2	0.8	6
M3	3.38	3.2	6	5.7	0.8	6
M3.5	3.88	3.7	7	6.64	1	6
M4	4.48	4.3	8	7.64	1	8
M5	5.48	5.3	10	9.64	1.2	8
M6	6.62	6.4	10	9.64	1.2	8
M8	8.62	8.4	15	14.57	1.6	8
M10	10.77	10.5	18	17.57	1.8	9
M12	13.27	13	20.5	19.98	2	10
M14	15.27	15	24	23.48	2	10
M16	17.27	17	26	25.48	2.4	12
M20	21.33	21	33	32.38	2.8	12

\*Slight deviation from the preferred number of teeth is permitted for JIS washers.

Description	A hardened circular washer with twisted prongs or "teeth" which extend inward from the inside edge of the washer.	A "soft" stainless circular washer with twisted prongs or "teeth" which extend inward from the inside edge of the washer.
Applications/ Advantages	This is preferred when finished appearance is crucial and the teeth must be hidden under the head of the screw; also recommended for use with small heads such as fillisters.	
Material	Spring steel	A2 Stainless Steel
Hardness	Vickers 350-425 HV	-
Plating	See Appendix-A for information on the plating of steel lock washers.	Stainless washers are usually provided without additional finish.