



SELF-TAPPING & THREAD-CUTTING SCREWS

STEEL
- and -
STAINLESS



THREAD-CUTTING

TYPE-F

- Flat Phillips
- Flat Phillips Undercut
- Oval Phillips
- Pan Phillips
- Truss Phillips
- Flat Slotted
- Pan Slotted
- Round Slotted
- Hex Slotted
- Hex Unslotted
- Hex Washer Phillips
- Hex Washer Slotted
 - Standard
 - Serrated
- Hex Washer Unslotted
 - Standard
 - Serrated
- Flat Six-Lobe Zinc
- Flat Six-Lobe Undercut
- Flat Six-Lobe Floorboard Black Phosphate
- Pan Six-Lobe
 - Zinc
 - Black Phosphate
- Pan Square Recess

TYPE-1—STEEL

- Flat Phillips
- Flat Phillips Undercut
- Pan Phillips
- Truss Phillips
- Pan Slotted
- Pan Six-Lobe
- Hex Slotted
- Hex Unslotted
- Hex Washer Slotted
 - Standard
 - Serrated
- Hex Washer Unslotted

TYPE-23—STEEL

- Flat Phillips
- Flat Phillips Undercut
- Hex Washer Phillips
- Oval Phillips
- Oval Phillips Undercut
- Pan Phillips
- Round Phillips
- Truss Phillips
- Pan Slotted
- Hex Slotted
- Hex Unslotted
- Hex Washer Slotted
 - Standard
 - Serrated
- Hex Washer Unslotted
- Flat Six-Lobe
- Pan Six-Lobe

TYPE-25—STEEL

- Flat Phillips
- Flat Phillips Undercut
- Truss Phillips
- Pan Phillips
- Pan Square Recess
- Flat Slotted
- Pan Slotted
- Hex Unslotted
- Hex Washer Slotted
- Hex Washer Unslotted
 - Standard
 - Serrated
- Flat Six-Lobe
- Flat Undercut Six-Lobe
- Pan Six-Lobe

SELF-TAPPING

COMBINATION DRIVE

- Hex Washer Type-AB
- Pan Type-A
- Pan Type-AB

PHILLIPS — TYPES A & AB

- Flat Type-A
- Flat Undercut Type-A
- Flat Type-AB
- Flat Undercut Type-AB
- Oval Type-A
- Oval Undercut Type-A
- Oval Type-AB
- Oval Undercut Type-AB
- #8 Oval with #6 Head Type-A
- #8 Oval with #6 Head Type-AB
- #10 Oval with #8 Head Type-AB
- Pan Type-A
- Pan Type-AB
- Pan Type-AB, Nickel Plate
- Pan Type-AB w/ Serrations
- Round Type-A
- Round Type-AB
- Round Washer
 - Type-A, Zinc Plate
 - Type-AB
 - Type-A, Chrome Plate

TRUSS

- Type-A
- Type-AB
- Type-AB, Chrome Plate
- Type-A w/#17 pt

HEX WASHER

- Phillips Type-A
- Phillips Type-AB

SLOTTED — TYPES A & AB

- Flat Type-A
- Flat Undercut Type-A
- Flat Type-AB
- Flat Undercut Type-AB
- Oval Type-A
- Oval Type-AB
- Pan Type-A
- Pan Type-AB
- Round Type-A
- Round Type-AB
- Truss Type-A
- Truss Type-AB
- Hex Slotted Type-A
- Hex Slotted Type-AB
- Hex Unslotted Type-A
- Hex Unslotted Type-AB
- Serrated Hex Washer Slotted
 - Type-A
 - Type-AB
- Serrated Hex Washer Unslotted
 - Type-A
 - Type-AB
- Hex Washer
 - Slotted Type-A
 - Slotted Type-AB
 - Unslotted Type-A
 - Unslotted Type-AB

SQUARE RECESS — TYPES A & AB

- Flat Type-A
- Flat Undercut Type-A
- Flat Type-AB
- Flat Undercut Type-AB
- Pan Type-A
- Pan Type-AB
- Truss Type-A
- Truss Type-AB
- Hex Washer Type-A

SIX-LOBE — TYPES A & AB

- Flat Type-A
- Flat Type-AB
- Flat Undercut Type-AB
- Pan Type-A
- Pan Type-AB
- Round Washer Type-A
- Truss Type-AB

POZIDRIV® ALTERNATIVES

- Pan Type-AB

TYPE-B — PHILLIPS

- 82° Flat Phillips
- Flat Undercut Phillips
- 100° Flat Phillips
- Oval Phillips
- Pan Phillips
- Round Phillips
- Truss Phillips
- Hex Washer Phillips

TYPE-B — SLOTTED & UNSLOTTED

- Pan Slotted
- Hex Slotted
- Serrated Hex Washer Slotted
- Serrated Hex Washer Unslotted
- Hex Washer Slotted
- Hex Washer Unslotted

TYPE-B — SIX LOBE

- Flat
- Flat Undercut
- Pan

TYPE-B — SQUARE RECESS

- Pan

SELF-PIERCING

- Hex Washer Combination
- Hex Washer Slotted
 - Standard
 - w/ Neo-EPDM Washer
 - w/ White-Painted Head
 - Serrated
- Hex Washer Unslotted
 - Standard
 - Serrated
- Truss Modified Phillips

HIGH-LOW SCREWS

- Flat Phillips
- Flat Undercut Phillips
- Hex Washer Phillips
- Pan Phillips
- Flat Six-Lobe
- Flat Undercut Six-Lobe
- Pan Six-Lobe
- Truss Phillips
- Pan Pozidriv®
- Hex Washer Slotted
- Hex Washer Unslotted

STEEL BLACK OXIDE

SELF-TAPPING

TYPES A & AB

- Phillips Flat Type-A
- Phillips Flat Undercut Type-A
- Phillips Flat Type-AB
- Phillips Flat Undercut Type-AB
- Phillips Pan Type-A
- Phillips Pan Type-AB
- Phillips Hex Washer Type-A
- Phillips Hex Washer Type-AB
- Phillips Oval Type-A
- Phillips Oval Type-AB
- Phillips Oval Type-A, #6 Head
- Phillips Oval Type-AB, #6 Head
- Phillips Round Washer Type-A
- Phillips Truss Type-A
- Phillips Truss Type-AB
- Slotted Indented Hex Washer
 - Type-A
 - Type-AB
 - Serrated Type-AB
- Unslotted Indented Hex Washer
 - Type-A
 - Type-AB
 - Serrated Type-AB
- Six-Lobe Flat Type-AB
- Six-Lobe Pan Type-AB
- Square Pan Type-A
- Square Pan Type-AB

TYPE-B

- Phillips Flat
- Phillips Flat Undercut
- Phillips Pan
- Phillips Truss
- Slotted Hex Washer
- Unslotted Hex Washer

HIGH-LOW SCREWS

- Phillips Flat
- Unslotted Hex Washer
- Phillips Pan
- Six-Lobe Flat
- Six-Lobe Pan

DRIVE SCREW

- Round Type-U Head

THREAD-CUTTING

TYPE-F

- Phillips Flat
- Phillips Flat Undercut
- Phillips Pan
- Phillips Truss
- Slotted Hex Washer
- Unslotted Hex Washer

TYPE-1

- Phillips Pan
- Unslotted Hex Washer

TYPE-23

- Phillips Pan
- Slotted Hex Washer
- Unslotted Hex Washer

TYPE-25

- Phillips Flat
- Phillips Pan

STEEL BLACK ZINC

SELF-TAPPING

TYPES A & AB

- Phillips Flat 82° Type-A
- Phillips Flat 82° Type-AB
- Phillips Flat Undercut Type-AB
- Phillips Hex Washer Type-AB
- Phillips Pan Type-AB
- Phillips Pan Type-A
- Phillips Oval Type-AB
- Phillips Oval Undercut Type-AB
- Phillips Round Washer Type-A
- Phillips Truss Type-A
- Phillips Truss Type-AB
- Hex Washer Slotted Type-AB
- Hex Washer Unslotted Type-AB
- Six-Lobe Pan Type-AB

TYPE B

- Phillips Flat Undercut
- Phillips Pan

HIGH-LOW SCREWS

- Phillips Flat
- Phillips Pan
- Six-Lobe Flat
- Six-Lobe Pan

THREAD-CUTTING

- Phillips Pan
 - Type-23
 - Type-25
 - Type-F
- Phillips Truss Type-F

STEEL GREEN, YELLOW, & SILVER RUSPERT

STEEL GREEN ZINC (SELF-TAPPING)

TYPE-AB

- Slotted Hex Washer

STEEL YELLOW ZINC (SELF-TAPPING)

TYPE-AB

- Flat Phillips
- Pan Phillips

STEEL SILVER RUSPERT (SELF-TAPPING)

TYPE-AB

- Unslotted Hex Washer

SELF-PIERCING

- Serrated Hex Washer Unslotted

STEEL GREEN ZINC (THREAD-CUTTING)

TYPE-F

- Phillips Hex Washer
- Slotted Hex Washer
- Unslotted Hex Washer

TYPE-1

- Slotted Hex Washer
- Unslotted Hex Washer

TYPE-23

- Slotted Hex Washer
- Unslotted Hex Washer

STEEL YELLOW ZINC (THREAD-CUTTING)

TYPE-F

- Pan Phillips

TYPE-1

- Slotted Hex Washer
- Unslotted Hex Washer

STAINLESS

SELF-TAPPING

COMBINATION DRIVE TYPE-A

- Pan 18-8

PHILLIPS TYPES A & AB

- Flat Type-A 18-8 & 18-8 (Black Oxide)
- Flat Undercut Type-A (18-8)
- Flat Type-AB (18-8)
- Flat Undercut Type-AB (18-8)
- Oval Type-A (18-8)
- Oval Type-AB (18-8)
- Oval Undercut Type-A (18-8)
- Oval Undercut Type-AB (18-8)
- #8 Oval w/#6 Head Type-A (18-8)
- Pan Type-A (18-8)
- Pan Type-AB (18-8, Plain)
- Pan Type-A (18-8, Black Oxide)
- Pan Type-AB (18-8, Black Oxide)
- Truss Type-A (18-8)
- Truss Type-AB (18-8)
- Truss Type-AB (410)
- Hex Washer Type-A (18-8)

SLOTTED & UNSLOTTED TYPES A & AB

- Pan Slotted Type-A (18-8)
- Pan Slotted Type-AB (18-8)
- Hex Washer Slotted Type-A (18-8)
- Hex Washer Slotted Type-AB (18-8)
- Serrated Hex Washer Slotted Type-AB (18-8)
- Hex Wash Unslotted Type-A (18-8)
- Hex Wash Unslotted Type-AB
 - 18-8
 - 18-8, Black Oxide
- Serrated Hex Washer Unslotted Type-AB (18-8)

SELF-PIERCING

- Hex Washer Slotted (18-8)
- Hex Washer Slotted (410)
- Hex Washer Unslotted (410)
- Modified Truss Phillips (18-8)
- Modified Truss Phillips (410)

SIX-LOBE TYPE A & AB

- Flat Type-AB (18-8)
- Flat Undercut Type-AB (18-8)
- Pan Type-A (18-8)
- Pan Type-AB (18-8)
- Pan Type-AB (18-8, Black Oxide)

SQUARE RECESS TYPE A & AB

- Flat Type-A (18-8)
- Flat Undercut A (18-8)
- Flat Undercut AB (18-8)
- Pan Type-A (18-8)
- Pan Type-AB (18-8)

TYPE-B

- Phillips Flat (18-8)
- Phillips Flat Undercut (18-8)
- Phillips Flat Undercut (410)
- Phillips Oval Undercut (18-8)
- Phillips Pan (18-8)
- Phillips Truss (18-8)
- Six-Lobe Pan (18-8)
- Unslotted Hex Washer (18-8)
- Slotted Hex Washer (18-8)

HIGH-LOW

- Phillips Flat (18-8)
- Phillips Flat (410)
- Phillips Flat Undercut (18-8)
- Phillips Flat Undercut (410)
- Phillips Pan (18-8)
- Phillips Pan (410)
- Slotted Hex Washer (18-8)
- Unslotted Hex Washer (410)
- Unslotted Hex Washer (18-8)
- Six-Lobe Flat (18-8)
- Six-Lobe Pan (18-8)
- Six-Lobe Pan (410)

THREAD-CUTTING

TYPE-F

- Phillips Flat (410)
- Phillips Flat (18-8)
- Phillips Flat Undercut (410)
- Phillips Flat Undercut (18-8)
- Phillips Flat Undercut (18-8, Black Oxide)
- Phillips Pan (18-8)
- Phillips Pan (410)
- Phillips Truss (18-8)
- Unslotted Hex (18-8)
- Slotted Hex Washer (18-8)
- Slotted Hex Washer (410)
- Unslotted Hex Washer (410)
- Unslotted Hex Washer (18-8)
- Six-Lobe Flat (18-8)
- Six-Lobe Pan (18-8)
- Square Recess Undercut (300)

TYPE-1

- Phillips Pan (18-8)

TYPE-23

- Phillips Flat (18-8)
- Phillips Flat Undercut (18-8)
- Phillips Pan (18-8)
- Slotted Hex Washer (18-8)
- Unslotted Hex Washer (18-8)

TYPE-25

- Phillips Flat (18-8)
- Phillips Flat Undercut (18-8)
- Phillips Pan (18-8)
- Phillips Pan (410)
- Phillips Truss (18-8)
- Six-Lobe Pan (18-8)
- Slotted Hex Washer (18-8)

THREAD-CUTTING (BLACK OXIDE)

TYPE-F

- Phillips Flat Undercut (18-8)

DRIVE SCREWS (TYPE-U)

- Round 18-8
- Round 316

MILITARY-GRADE

SELF-TAPPING

- MS51861 Pan Phillips Type-AB (Steel Cadmium)
- MS51861 Pan Phillips Type-AB (410 Stainless)

THREAD-CUTTING APPLICATIONS



TYPE-1

Best used in steel sheets, structural shapes, special alloy steels, cast iron, brass or plastics. Point has a single cutting edge which can be useful as a field replacement part.



TYPE-23

Well-suited for cast iron and zinc, aluminum die castings and plastics. Offers largest thread-cutting area with superior chip clearing.



TYPE-25

Preferred for molded or through holes in plastics and other soft materials. Comparable to the Type-23 for thread-cutting area and chip clearing.



TYPE-F

For use in heavy gauge sheet metal, aluminum, zinc and lead die castings, cast iron, brass and plastic. Point has multiple cutting edges, each with small chip cavities.

SELF-TAPPING APPLICATIONS



HIGH-LOW

For use in nylon, wood or other low-density materials. Thread design reduces driving torques, enhances resistance to thread stripping, improves pullout strength and lessens the risk of cracking the work piece.



TYPE-A

Can be used for self-starting in sheet metals from .015 - .050 thick. It is preferred over a Type-AB in thinner sheets, although the Type-A is not as readily available throughout the industry.



TYPE-AB

Can be used for self-starting in sheet metals from .015 - .050 thick. It is preferred over a Type-A in heavier sheets and when used in brittle materials.



TYPE-B

For use in molded or through holes in thin metal, non-ferrous castings, plastics or resin-filled plywood.

THE KANEBRIDGE ADVANTAGE



Over 43,000 Items

Kanebridge is a master distributor with over 43,000 items in inventory, including over 9,600 stainless steel and 2,000 Military fasteners.



Order By Credit Card

We accept Visa, MasterCard, Discover and American Express for new sales orders and outstanding balances.



Same-Day Shipping

All orders placed by 5pm can ship the same day when using UPS. Emergency orders are ready within one hour. Airfreight orders placed by 7:45 PM Eastern (4:45 PM Pacific) can ship same day (based on stock availability in our California warehouse).



Free Certifications

Chemical & Physical certifications are available on all thru-hardened parts and all items made to military specifications. We also keep all certifications on file and properly archived. Access any certification anytime you need it at no charge.



Fastener Specifications Guide

Kanebridge's newest 6th edition of its Fastener Reference Guide is available from stock in all 3 of our branches. This hard cover reference volume is the most comprehensive and up-to-date collection of fastener specifications Kanebridge has ever offered. The Reference Guide can also be accessed online at www.kanebridge.com.



No Fault Return Policy

We will accept returns of full carton quantities for any reason. There is no restocking charge on items returned within 30 days, without any alterations and accompanied with a return authorization. Material returned after 30 days will be subject to a 20% restocking charge; after 90 days returns may not be accepted. We prefer returns in our original boxes and lots must not be mingled. Thru-hardened or military grade fasteners will not be accepted unless returned in the original box(es).



99% Service Level

99% of the items listed in this catalog are available from stock every day from one of our three warehouses located coast to coast: New Jersey, Illinois and California.



Traceability

Lot control is maintained on all items in our inventory.



Drop-Shipping

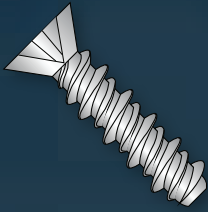
Kanebridge can ship orders directly to your customer with a packing list and shipping label that show you as the vendor. Combine with our Custom Label service for a simplified method of shipment.



Custom Labeling

Streamline your receiving operations by letting Kanebridge affix custom labels to each box you order. Include any information you need; part number, part description, lot number and country of origin in alphanumeric and/or bar code formats.

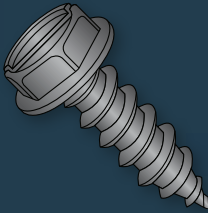
SELF-TAPPING



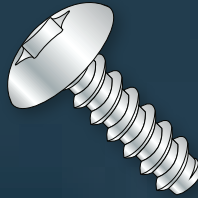
HIGH LOW



TYPE-A



TYPE-AB



TYPE-B

THREAD-CUTTING



TYPE-1



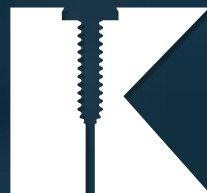
TYPE-23



TYPE-25



TYPE-F



**KANEBRIDGE
CORPORATION**
New Jersey | Illinois | California

T: (800) 222-9221 sales@kanebridge.com

F: (201) 337-2301 www.kanebridge.com