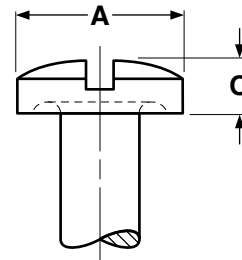
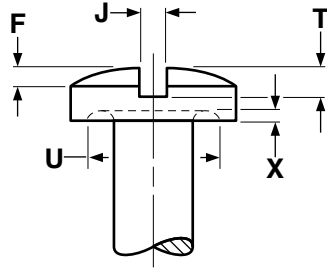


Slotted Binding Truss

Head Dimensions

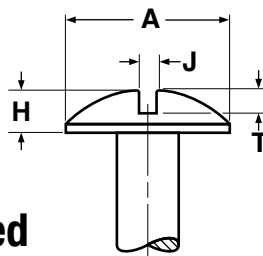
Machine Screws



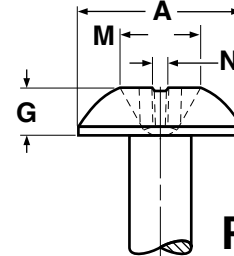
SLOTTED BINDING HEADS UNDERCUT FOR MACHINE SCREWS

ASME B18.6.3
2002

Nominal Size	A		F		O		J		T		U		X	
	Head Diameter		Height of Head				Width of Slot		Depth of Slot		Dimensions of Undercut			
			Height of Oval		Total Height						Diameter		Depth	
	Max	Min	Max	Min	Max	Min	Max	Min	Max	Min	Max	Min	Max	Min
2	.181	.171	.018	.013	.050	.043	.031	.023	.030	.020	.141	.124	.010	.005
3	.208	.197	.022	.016	.059	.052	.035	.027	.036	.025	.162	.143	.011	.006
4	.235	.223	.025	.018	.068	.061	.039	.031	.042	.030	.184	.161	.012	.007
5	.263	.249	.029	.021	.078	.069	.043	.035	.048	.035	.205	.180	.014	.009
6	.290	.275	.032	.024	.087	.078	.048	.039	.053	.040	.226	.199	.015	.010
8	.344	.326	.039	.029	.105	.095	.054	.045	.065	.050	.269	.236	.017	.012
10	.399	.378	.045	.034	.123	.112	.060	.050	.077	.060	.312	.274	.020	.015
12	.454	.430	.052	.039	.141	.130	.067	.056	.089	.070	.354	.311	.023	.018
1/4	.525	.498	.061	.046	.165	.152	.075	.064	.105	.084	.410	.360	.026	.021



Slotted



Phillips

TRUSS HEADS FOR MACHINE SCREWS

ASME B18.6.3-2002

Nominal Size	A		H		J		T		M		G		N	Phillips Driver Size
	Head Diameter		Height of Head		Width of Slot		Depth of Slot		Dimensions of Recess					
									Diameter		Depth		Width	
	Max	Min	Max	Min	Max	Min	Max	Min	Max	Min	Max	Min	Min	
2	.194	.180	.053	.044	.031	.023	.031	.022	.104	.091	.059	.041	.018	1
3	.226	.211	.061	.051	.035	.027	.036	.026	.110	.097	.066	.049	.018	1
4	.257	.241	.069	.059	.039	.031	.040	.030	.112	.099	.069	.051	.018	1
5	.289	.272	.078	.066	.043	.035	.045	.034	.128	.115	.085	.067	.019	1
6	.321	.303	.086	.074	.048	.039	.050	.037	.158	.145	.084	.059	.027	2
8	.384	.364	.102	.088	.054	.045	.058	.045	.173	.160	.099	.074	.029	2
10	.448	.425	.118	.103	.060	.050	.068	.053	.188	.175	.115	.090	.030	2
12	.511	.487	.134	.118	.067	.056	.077	.061	.248	.235	.128	.103	.032	3
1/4	.573	.546	.150	.133	.075	.064	.087	.070	.263	.250	.143	.118	.033	3
5/16	.698	.666	.183	.162	.084	.072	.106	.085	.352	.339	.193	.168	.059	4
3/8	.823	.787	.215	.191	.094	.081	.124	.100	.383	.370	.226	.202	.063	4
1/2	1.073	1.028	.280	.250	.106	.091	.161	.131	.444	.431	.288	.263	.072	4