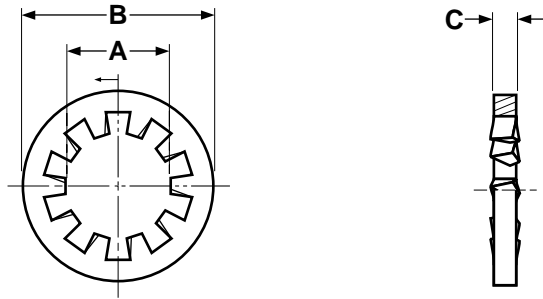


Internal Tooth Lockwasher

METRIC

Washers



METRIC - INTERNAL TOOTH LOCKWASHERS

DIN 6797 J;
JIS B 1255

Nominal Size	A		B		C		Preferred Number of Teeth*
	Inside Diameter		Outside Diameter		Thickness		
	Max	Min	Max	Min	Max	Min	
M2	2.4	2.2	4.8	4.5	0.325	0.275	7
M2.5	2.9	2.7	5.7	5.4	0.325	0.275	7
M3	3.4	3.2	6.5	6.1	0.485	0.415	8
M3.5	3.9	3.7	7.5	7.1	0.485	0.415	8
M4	4.5	4.3	8.5	8.1	0.485	0.415	8
M5	5.5	5.3	10	9.6	0.64	0.56	8
M6	6.7	6.4	11	10.5	0.64	0.56	9
M8	8.7	8.4	15	14.5	0.85	0.75	9
M10	10.9	10.5	18	17.5	0.95	0.85	9
M12	12.9	12.5	21	20.4	1.055	0.945	10
M14	14.9	14.5	23	22.4	1.055	0.945	10
M16	16.9	16.5	26	25.4	1.265	1.135	12
M20	21.5	21	32	31.2	1.47	1.33	12

* Slight deviation from the preferred number of teeth is permitted.

Description	A hardened circular washer with twisted prongs or "teeth" which extend inward from the inside edge of the washer.
Applications/ Advantages	This is preferred when finished appearance is crucial and the teeth must be hidden under the head of the screw; also recommended for use with small heads such as fillisters.
Material	Spring steel
Hardness	Rockwell C41 - 47
Plating	See Appendix-A for information on the plating of steel lock washers.